

Sociocultural Data Report

UACDC-Harvest of Hope - UACD ByLaw Boundary

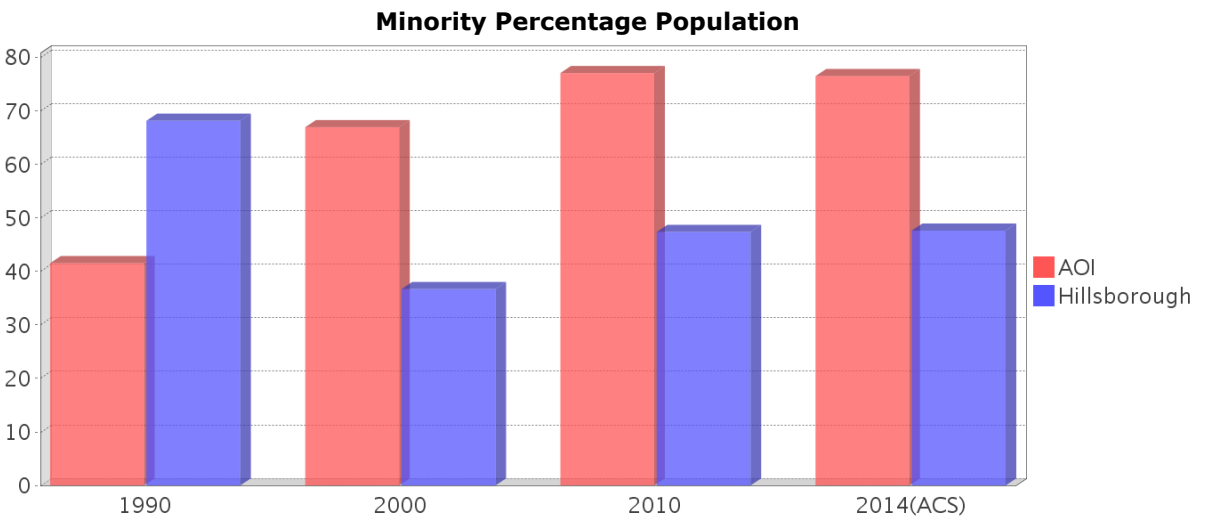
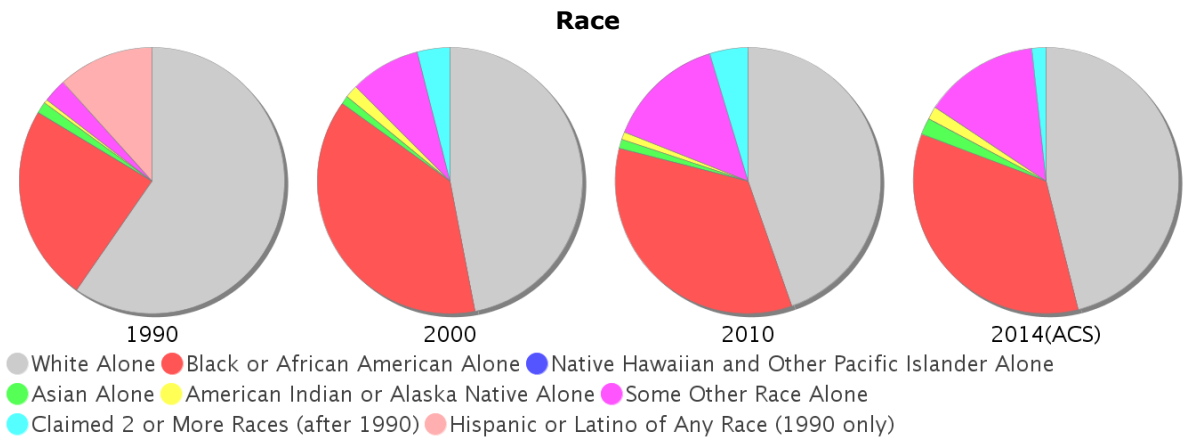
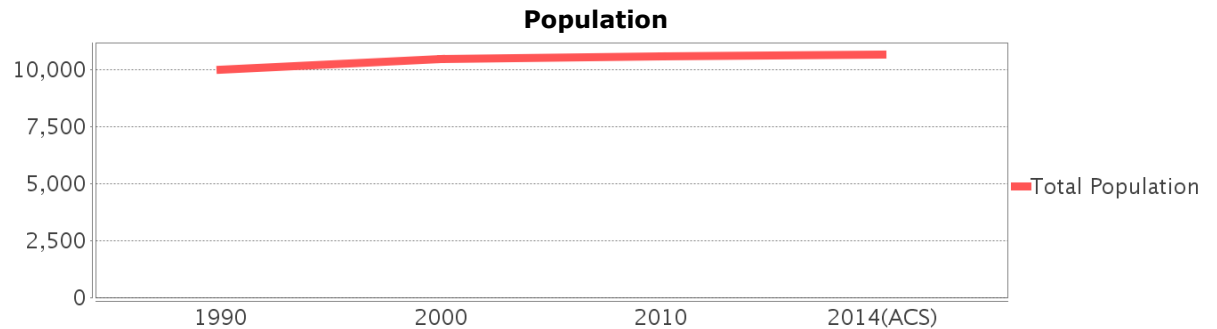
Area: 1.394 square miles
Jurisdiction(s): **Cities:** NA
Counties: Hillsborough

General Population Trends

Description	1990	2000	2010	2014(ACS)
Total Population	9,980	10,449	10,573	10,650
Total Households	4,455	4,271	4,266	4,021
Average Persons per Acre	11.42	12.46	13.56	13.19
Average Persons per Household	2.21	2.24	2.47	2.49
Average Persons per Family	3.00	3.18	3.00	3.32
Males	4,988	5,358	5,533	5,198
Females	4,992	5,092	5,040	5,452

Race and Ethnicity Trends

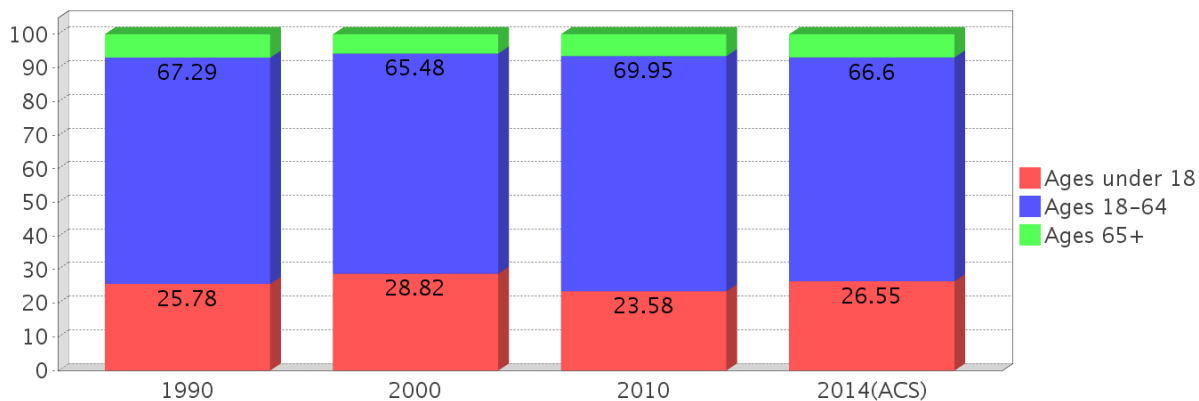
Description	1990	2000	2010	2014(ACS)
White Alone	6,738 (67.52%)	4,906 (46.95%)	4,717 (44.61%)	4,907 (46.08%)
Black or African American Alone	2,710 (27.15%)	3,965 (37.95%)	3,625 (34.29%)	3,685 (34.60%)
Native Hawaiian and Other Pacific Islander Alone	2 (0.02%)	0 (0.00%)	3 (0.03%)	0 (0.00%)
Asian Alone	156 (1.56%)	106 (1.01%)	117 (1.11%)	221 (2.08%)
American Indian or Alaska Native Alone	53 (0.53%)	162 (1.55%)	100 (0.95%)	165 (1.55%)
Some Other Race Alone	320 (3.21%)	895 (8.57%)	1,515 (14.33%)	1,486 (13.95%)
Claimed 2 or More Races	NA (NA)	416 (3.98%)	496 (4.69%)	186 (1.75%)
Hispanic or Latino of Any Race	1,326 (13.29%)	2,720 (26.03%)	4,351 (41.15%)	4,463 (41.91%)
Not Hispanic or Latino	8,654 (86.71%)	7,729 (73.97%)	6,222 (58.85%)	6,187 (58.09%)
Minority	4,148 (41.56%)	6,997 (66.96%)	8,150 (77.08%)	8,150 (76.53%)



Age Trends

Description	1990	2000	2010	2014(ACS)
Under Age 5	10.60%	9.79%	9.12%	9.46%
Ages 5-17	15.18%	19.03%	14.46%	17.10%
Ages 18-21	8.97%	9.72%	9.53%	10.27%
Ages 22-29	25.05%	18.10%	20.49%	17.16%
Ages 30-39	17.75%	17.14%	14.72%	17.40%
Ages 40-49	8.22%	12.19%	12.01%	10.29%
Ages 50-64	7.31%	8.33%	13.20%	11.47%
Age 65 and Over	6.92%	5.70%	6.47%	6.84%
-Ages 65-74	3.62%	2.88%	3.51%	3.94%
-Ages 75-84	2.14%	2.08%	1.92%	2.04%
-Age 85 and Over	1.16%	0.75%	1.04%	0.86%
Median Age	NA	28	29	27

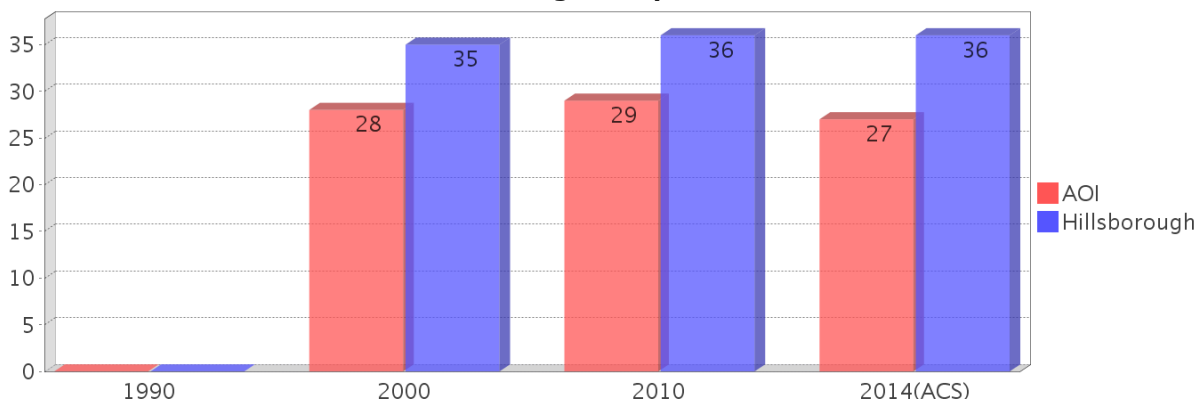
Population by Age Group



Income Trends

Description	1990	2000	2010	2014(ACS)
Median Household Income	\$17,261	\$22,848	\$21,750	\$21,910
Median Family Income	\$19,509	\$25,542	\$30,417	\$25,642
Population below Poverty Level	28.94%	31.90%	36.85%	44.11%
Households below Poverty Level	26.69%	28.52%	37.27%	47.00%
Households with Public Assistance Income	9.63%	7.87%	12.61%	8.41%

Median Age Comparison

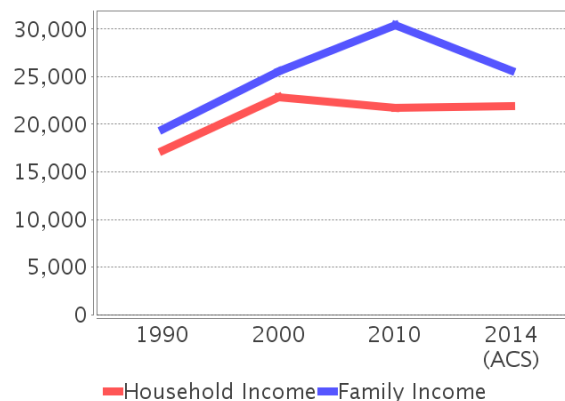


Disability Trends

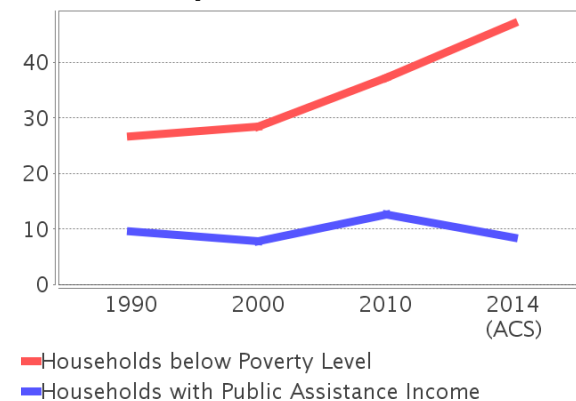
See the Data Sources section below for an explanation about the differences in disability data among the various years.

Description	1990	2000	2010	2014(ACS)
Population 16 To 64 Years with a disability	797 (10.83%)	2444 (25.95%)	(NA)	(NA)
Population 20 To 64 Years with a disability	(NA)	(NA)	(NA)	918 (13.88%)

Income Trends



Poverty and Public Assistance



Educational Attainment Trends

Age 25 and Over

Description	1990	2000	2010	2014(ACS)
Less than 9th Grade	495 (8.83%)	535 (9.66%)	965 (15.61%)	1,282 (21.16%)
9th to 12th Grade, No Diploma	998 (17.81%)	1,110 (20.04%)	968 (15.66%)	751 (12.39%)
High School Graduate or Higher	4,111 (73.36%)	3,896 (70.32%)	4,250 (68.74%)	4,026 (66.45%)
Bachelor's Degree or Higher	853 (15.22%)	611 (11.03%)	691 (11.18%)	589 (9.72%)

Language Trends

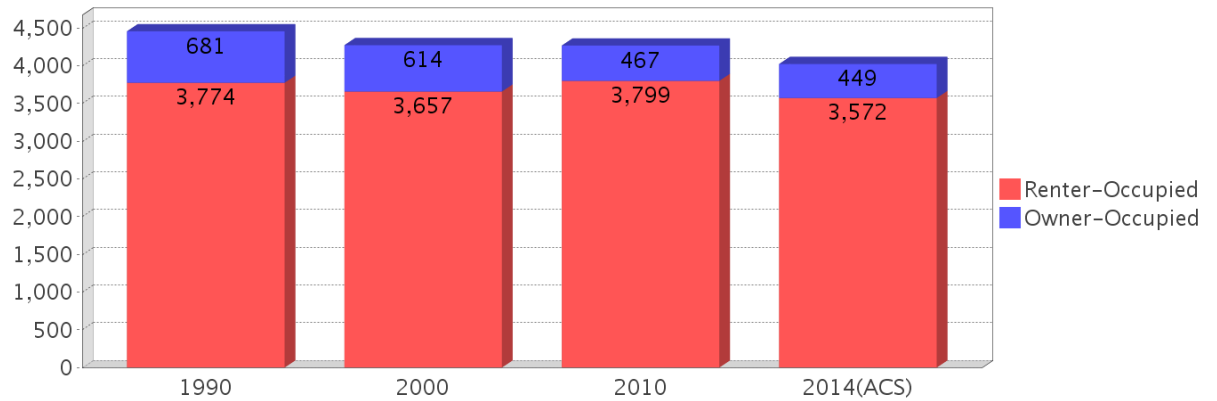
Age 5 and Over

Description	1990	2000	2010	2014(ACS)
Speaks English Well	373 (4.20%)	482 (5.11%)	619 (6.47%)	474 (4.92%)
Speaks English Not Well	NA (NA)	431 (4.57%)	686 (7.17%)	777 (8.06%)
Speaks English Not at All	NA (NA)	346 (3.67%)	1,002 (10.48%)	1,053 (10.92%)
Speaks English Not Well or Not at All	350 (3.94%)	777 (8.24%)	1,688 (17.65%)	1,830 (18.98%)

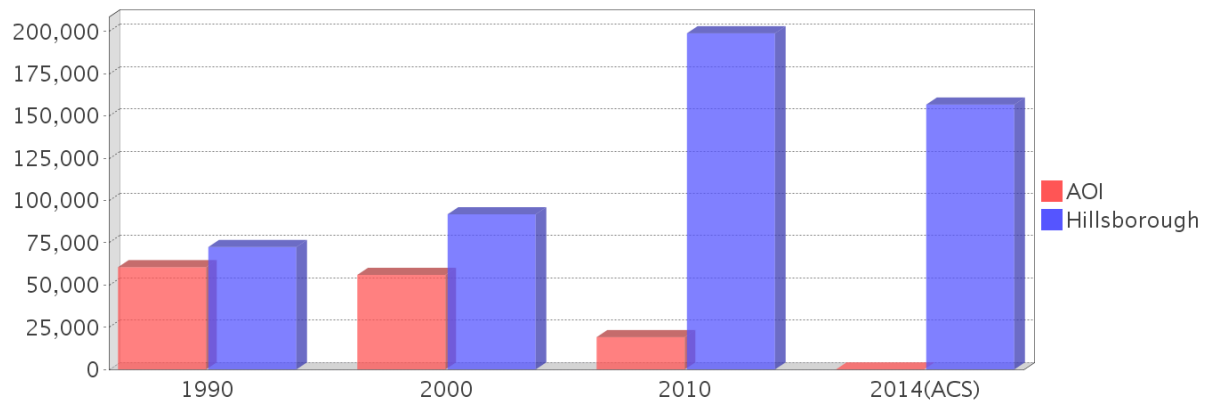
Housing Trends

Description	1990	2000	2010	2014(ACS)
Total	6,064	5,114	5,538	5,221
Units per Acre	6.26	5.40	5.64	5.27
Single-Family Units	294	419	640	510
Multi-Family Units	3,519	4,168	4,310	4,229
Mobile Home Units	606	527	540	469
Owner-Occupied Units	681	614	467	449
Renter-Occupied Units	3,774	3,657	3,799	3,572
Vacant Units	1,609	843	1,272	1,200
Median Housing Value	\$60,500	\$55,950	\$19,100	\$0
Occupied Housing Units w/No Vehicle	712 (15.98%)	1,040 (24.35%)	1,447 (33.92%)	1,458 (36.26%)

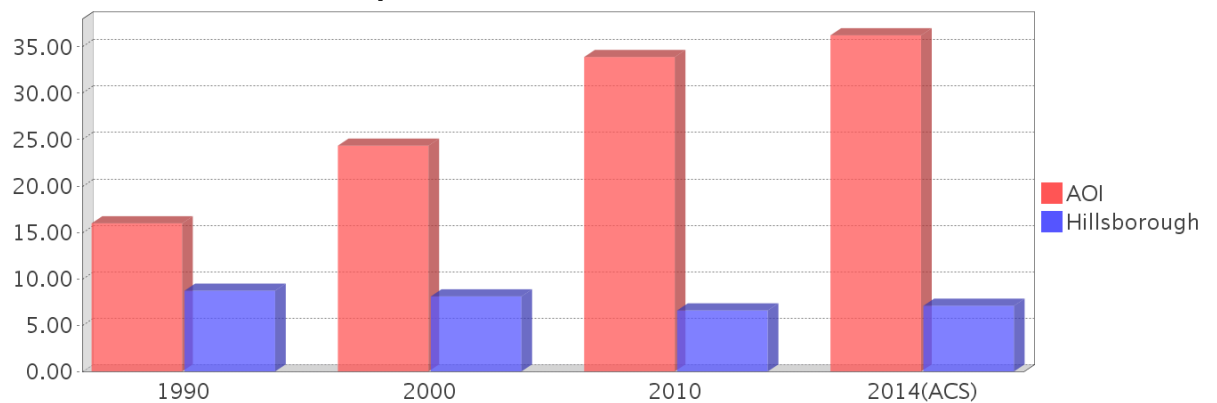
Housing Tenure



Median Housing Value Comparison

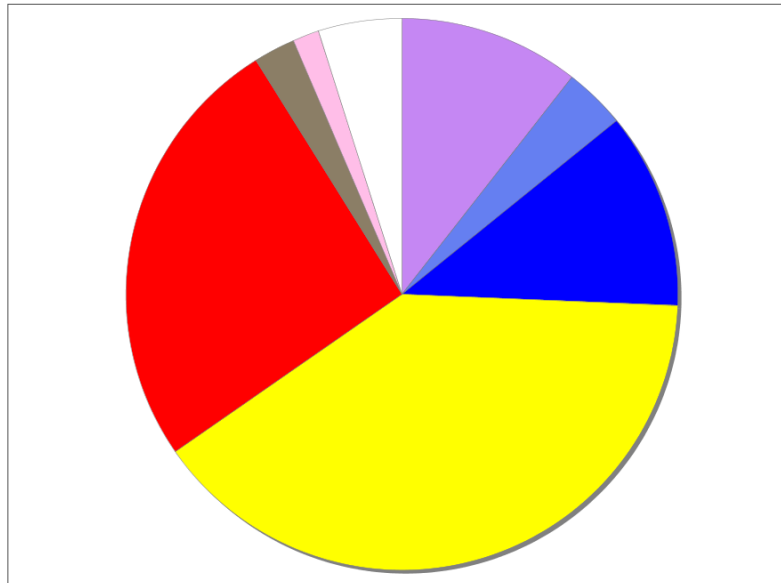


Occupied Units With No Vehicles Available



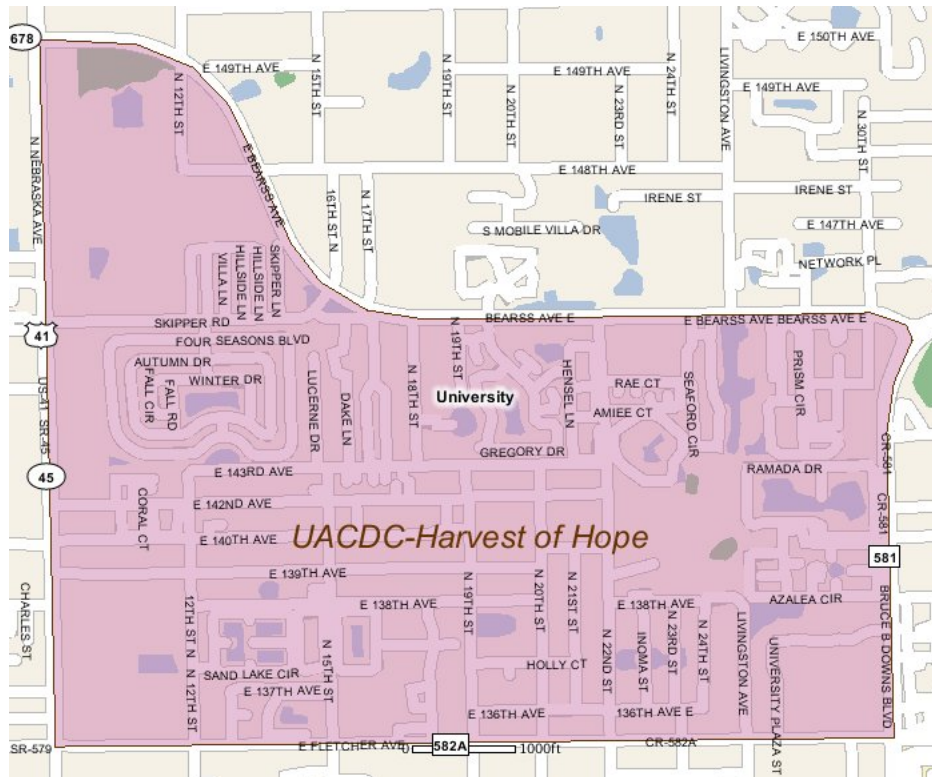
Existing Land Use

Land Use Type	Acres	Percentage
Acreage Not Zoned For Agriculture	0	0.00%
Agricultural	0	0.00%
Centrally Assessed	0	0.00%
Industrial	82	9.19%
Institutional	28	3.14%
Mining	0	0.00%
Other	0	0.00%
Public/Semi-Public	89	9.98%
Recreation	0	0.00%
Residential	308	34.53%
Retail/Office	200	22.42%
Row	0	0.00%
Vacant Residential	19	2.13%
Vacant Nonresidential	12	1.35%
Water	0	0.00%
Parcels With No Values	38	4.26%



- Acreage Not Zoned For Agriculture
- Agricultural
- Centrally Assessed
- Industrial
- Institutional
- Mining
- Other
- Public/Semi-Public
- Recreation
- Residential
- Retail/Office
- Row
- Vacant Residential
- Vacant Nonresidential
- Water
- Parcels With No Values

Location Maps



Community Facilities

The community facilities information below is useful in a variety of ways for environmental evaluations. These community resources should be evaluated for potential sociocultural effects, such as accessibility and relocation potential. The facility types may indicate the types of population groups present in the project study area. Facility staff and leaders can be sources of community information such as who uses the facility and how it is used. Additionally, community facilities are potential public meeting venues.

Assisted Housing (Points)

Facility Name	Address	Zip Code
NORTHSIDE PROPERTIES I	14011 N 22ND STREET	33613
CEDAR TRACE APARTMENTS	2200 CEDAR TRACE CIR	33613
COUNTRY OAKS APARTMENTS	14316 DAKE LN	33613
HASSINGER PROPERTIES C	1913 & 1915 EAST 137TH AVE.	33613
HASSINGER PROPERTIES D	1917 & 1919 EAST 137TH AVE.	33613

Community Centers (Points)

Facility Name	Address	Zip Code
AMERICAN LEGION POST 334	929 E 139TH AVE	33613
JUNIOR ACHIEVEMENT - TAMPA	13707 22ND ST N	33613
AMVETS POST 4	1014 SKIPPER RD	33613
UNIVERSITY AREA COMMUNITY DEVELOPMENT CORP	14013 N 22ND ST	33613

FDOH Group Care Facilities

Facility Name	Address	Zip Code
ACCESS MANOR - NORTHSIDE CENTE	2220 E 138TH AVE	33613
SKIPPER ROAD CLUSTER HOME	2611 E BEARSS AVE	33613
BOWERS/WHITLEY CAREER CTR & MU	13609 N 22ND ST	33613
REFLECTIONS APT GROUP HOME	14511 PRISM CIR	33613
WELCOME HOME ALF	1905 E 137TH AVE	33613
SHADY OAKS RETIREMENT HOME	2208 E 138TH AVE	33613

Fire Stations (Points)

Facility Name	Address	Zip Code
N HILLSBOROUGH FIRE DEPARTMENT AND RESCUE STATION 14	113 E 139TH AVE	33613

Government Building

Facility Name	Address	Zip Code
HILLSBOROUGH COUNTY HEALTH DEPARTMENT - UNIVERSITY AREA COMMUNITY HEALTH CENTER	13601 N 22ND ST	33613

Healthcare Facilities (Geocoded)

Facility Name	Address	Zip Code
BADDOURA, NAJI MD	14434 BRUCE B DOWNS BOULEVARD	33613
HEARTCARE INSTITUTE OF TAMPA	14320 BRUCE B DOWNS BOULEVARD	33613
MEDEXPRESS URGENT CARE (BRUCE)	13610 BRUCE B DOWNS BOULEVARD	33613
ACCENTIA HEALTH AND REHABILITATION CENTER OF TAMPA	1818 E FLETCHER AVENUE	33612
TAMPA WOMENS HEALTH CENTER	2010 E FLETCHER AVENUE	33612
NEW TAMPA OB/GYN	14424 BRUCE B DOWNS BOULEVARD	33613
TFHC #24 UNIVERSITY AREA	13601 N 22ND STREET	33613
BAY AREA EYE INSTITUTE	14462 BRUCE B DOWNS BOULEVARD	33613

Law Enforcement Facilities (Points)

Facility Name	Address	Zip Code
HILLSBOROUGH COUNTY SHERIFF'S OFFICE DISTRICT I	14102 20TH ST N	33613

Mobile Home Parks in Florida

Facility Name	Address	Zip Code
VILLAGE OF TAMPA	1201 E SKIPPER RD	33602
BREEZEWOOD MHP	1701 SKIPPER RD	33613
KUM BACK TP	14011 NEBRASKA AVE	33613

Public and Private Schools (Points)

Facility Name	Address	Zip Code
BOWERS-WHITLEY CAREER CENTER	13609 N 22ND STREET	33613
MULLER ELEMENTARY SCHOOL	13615 N 22ND STREET	33613

Religious Centers (Points)

Facility Name	Address	Zip Code
TRIUMPHANT CHURCH FELLOWSHIP	14701 N NEBRASKA AVENUE	33613
UNIVERSITY CHURCH OF CHRIST	14314 BRUCE B DOWNS BOULEVARD	33613
NEW JERUSALEM HAITIAN BAPTIST CHURCH	1912 EAST 139TH AVENUE	33613
MISION SANTA MARIA	14004 N 15TH ST	33613

Social Services (Geocoded)

Facility Name	Address	Zip Code
HOPE CHILDRENS HOME THRIFT STORE	1450 SKIPPER RD	33613
THE SALVATION ARMY	13901 N NEBRASKA AVE	33613
HILLSBOROUGH COUNTY - HEALTH & SOCIAL SERVICES - VETERANS AFFAIRS PROGRAM	1101 EAST 139TH AVENUE	33613
ACCESS HOUSE REHABILITATION PROGRAM	1109 E 139TH AVE	33613
YOUTH SERVICES DJJ PROGRAM	13706 NORTH 23RD STREET	33613
HILLSBOROUGH COUNTY - SOCIAL SERVICES DIVISION	13701 NORTH 23RD STREET	33613
SHADY OAKS RETIREMENT HOME	2208 EAST 138TH AVENUE	33613
AMERICAN LEGION	929 139TH AVENUE EAST	33612
QUEST INC	2611 E BEARSS AVE	33613
LANDWIRTH LISA LCSW	14437 BRUCE B DOWNS BOULEVARD	33613
HEAD START	14915 N NEBRASKA AVE	33613
PRECIOUS STAR ACADEMY	1202 SKIPPER ROAD	33613
YOUTH EMPOWERED TO ACHIEVE	13704 N 20TH STREET	33613
NORTHSIDE PROPERTIES	14011 N 22ND ST	33613
WEE CARE	1823 EAST 142ND AVENUE	33613
APPLEBAUM HAL J MD	14320 BRUCE B DOWNS BOULEVARD	33613
ARC	13719 NEBRASKA AVENUE NORTH	33613
AMVETS POST 4	1014 SKIPPER ROAD	33613
UNIVERSITY AREA COMMUNITY DEVELOPMENT CORPORATION	14013 NORTH 22ND STREET	33613
NORTHSIDE MENTAL HEALTH	2220 E 138TH AVENUE	33613
NEUROPSYCHOLOGICAL SERVICES OS TAMPA	14495 BRUCE B DOWNS BLVD	33613

US Census Places

Facility Name
University

Veteran Organizations and Facilities (Points)

Facility Name	Address	Zip Code
AMERICAN LEGION POST 334	929 E 139TH AVE	33613
AMVETS POST 4	1014 SKIPPER ROAD	33613

Block Groups

The following Census Block Groups were used to calculate demographics for this report.

1990 Census Block Groups

120570108072, 120570108073, 120570110031, 120570110043, 120570108071, 120570108074, 120570110033, 120570108081, 120570110034, 120570108083, 120570108082

2000 Census Block Groups

120570108051, 120570108082, 120570108052, 120570108074, 120570108062, 120570108081, 120570110032, 120570108072, 120570108064, 120570110031, 120570108071, 120570108073, 120570108033, 120570110101

2010 Census Block Groups

120570108051, 120570110102, 120570108181, 120570108151, 120570108052, 120570108172, 120570108183, 120570108082, 120570108131, 120570108182, 120570110033, 120570108132, 120570108171, 120570110032, 120570108081

2014 Census Block Groups

120570108181, 120570108052, 120570108151, 120570108082, 120570110102, 120570108051, 120570108131, 120570108172, 120570110033, 120570110032, 120570108171, 120570108081, 120570108132, 120570108182, 120570108183

Data Sources

Area

The geographic area of the community based on a user-specified community boundary or area of interest (AOI) boundary.

Jurisdiction

Jurisdiction(s) includes local government boundaries that intersect the community or AOI boundary.

Demographic Data

Demographic data reported under the headings General Population Trends, Race and Ethnicity Trends, Age Trends, Income Trends, Educational Attainment Trends, Language Trends, and Housing Trends is from the U.S. Decennial Census (1990, 2000, and 2010) and the American Community Survey (ACS) 5-year estimates from 2006-2010 and 2010-2014. The data was gathered at the block group level for user-specified community boundaries and AOIs, and at the county level for counties. Depending on the dataset, the data represents 100% counts (Census Summary File 1) or sample-based information (Census Summary File 3 or ACS).

About the Census Data:

User-specified community boundaries and AOIs do not always correspond precisely to block group boundaries. In these instances, adjustment of the geographic area and data for affected block groups is required to estimate the actual population. To improve the accuracy of such estimates in the SDR report, the census block group data was adjusted to exclude all census blocks with a population of two or fewer. These areas were eliminated from the corresponding years' block groups. Next, the portion of the block group that lies outside of the community or AOI boundary was removed. The demographics within each block group were then recalculated, assuming an equal area distribution of the population. Note that there may be areas where there is no population.

Use caution when comparing the 100% count data (Decennial Census) to the sample-based data (ACS). In any given year, about one in 40 or 2.5% of U.S. households will receive the ACS questionnaire. Over any five-year period, about one in eight households will receive the questionnaire, as compared to about one in six that received the long form questionnaire for the Decennial Census 2000. (Source: <http://mcdc.missouri.edu/pub/data/acs/Readme.shtml>) The U.S. Census Bureau provides help with this process:

http://www.census.gov/acs/www/guidance_for_data_users/comparing_2014/

Use caution when interpreting changes in Race and Ethnicity over time. Starting with the 2000 Decennial Census, respondents were given a new option of selecting one or more race categories. Also in 2000, the placement of the question about Hispanic origin changed, helping to increase responsiveness to the Hispanic-origin question. Because of these and other changes, the 1990 data on race and ethnicity are not directly comparable with data from later censuses.

(Source: <http://www.census.gov/prod/2001pubs/c2kbr01-1.pdf>;

<http://www.census.gov/pred/www/rpts/Race%20and%20Ethnicity%20FINAL%20report.pdf>)

The "Minority" calculations are derived from Census and ACS data using both the race and ethnicity responses. On this report, "Minority" refers to individuals who list a race other than White and/or list their ethnicity as Hispanic/Latino. In other words, people who are multi-racial, any single race other than White, or Hispanic/Latino of any race are considered minorities.

Disability data is not included in the 2010 Decennial Census, or the 2006-2010 ACS. This data is available in the 2010-2014 ACS.

Because of changes made to the Census and ACS questions between 1990 and 2014, disability variables should not be compared from year to year. For example: 1) With the 1990 data the disabilities are listed as a "work disability" while this distinction is not made with 2000 or 2013 ACS data; 2) The 2013 ACS data includes the institutionalized population (e.g. persons in prisons and group homes), while this population is not included in 1990 or 2000; 3) the age groupings changed over the years.

Please take the following two concerns into account when viewing this data: 1) With the 1990 data the disabilities are listed as a "work disability" while this distinction is not made with 2000 or 2014 ACS data; 2) The 2014 ACS data includes the institutionalized population (e.g. persons in prisons and group homes), while this population is not included in 1990 or 2000.

The category Bachelor's Degree or Higher under the heading Educational Attainment Trends is a subset of the category High School Graduate or Higher.

Income of households. This includes the income of the householder and all other individuals 15 years old and over in the household, whether they are related to the householder or not. Because many households consist of only one person, average household income is usually less than average family income.

Income of families. In compiling statistics on family income, the incomes of all members 15 years old and over related to the householder are summed and treated as a single amount.

Age Trends median age for 1990 is not available.

Land Use Data

The Land Use information indicates acreages and percentages for the generalized land use types used to group parcel-specific, existing land use assigned by the county property appraiser office according to the Florida Department of Revenue land use codes.

Community Facilities Data

- Assisted Rental Housing Units - Identifies multifamily rental developments that receive funding assistance under federal, state, and local government programs to offer affordable housing as reported by the Shimberg Center for Housing Studies, University of

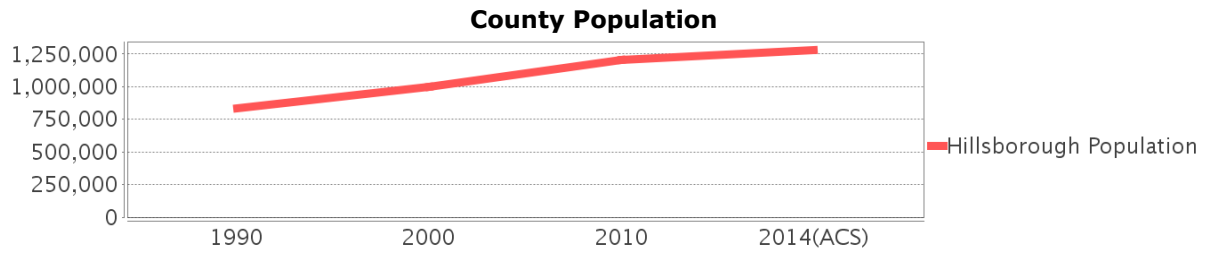
Florida.

- Mobile Home Parks - Identifies approved or acknowledged mobile home parks reported by the Florida Department of Business and Professional Regulation and Florida Department of Health.
- Migrant Camps - Identifies migrant labor camp facilities inspected by the Florida Department of Health.
- Group Care Facilities - Identifies group care facilities inspected by the Florida Department of Health.
- Community Center and Fraternal Association Facilities - Identifies facilities reported by multiple sources.
- Law Enforcement Correctional Facilities - Identifies facilities reported by multiple sources.
- Cultural Centers - Identifies cultural centers including organizations, buildings, or complexes that promote culture and arts (e.g., aquariums and zoological facilities; arboreta and botanical gardens; dinner theaters; drive-ins; historical places and services; libraries; motion picture theaters; museums and art galleries; performing arts centers; performing arts theaters; planetariums; studios and art galleries; and theater producers stage facilities) reported by multiple sources.
- Fire Department and Rescue Station Facilities - Identifies facilities reported by multiple sources.
- Government Buildings - Identifies local, state, and federal government buildings reported by multiple sources.
- Health Care Facilities - Identifies health care facilities including abortion clinics, dialysis clinics, medical doctors, nursing homes, osteopaths, state laboratories/clinics, and surgicenters/walk-in clinics reported by the Florida Department of Health.
- Hospital Facilities - Identifies hospital facilities reported by multiple sources.
- Law Enforcement Facilities - Identifies law enforcement facilities reported by multiple sources.
- Parks and Recreational Facilities - Identifies parks and recreational facilities reported by multiple sources.
- Religious Center Facilities - Identifies religious centers including churches, temples, synagogues, mosques, chapels, centers, and other types of religious facilities reported by multiple sources.
- Private and Public Schools - Identifies private and public schools reported by multiple sources.
- Social Service Centers - Identifies social service centers reported by multiple sources.
- Veteran Organizations and Facilities

Hillsborough County Demographic Profile

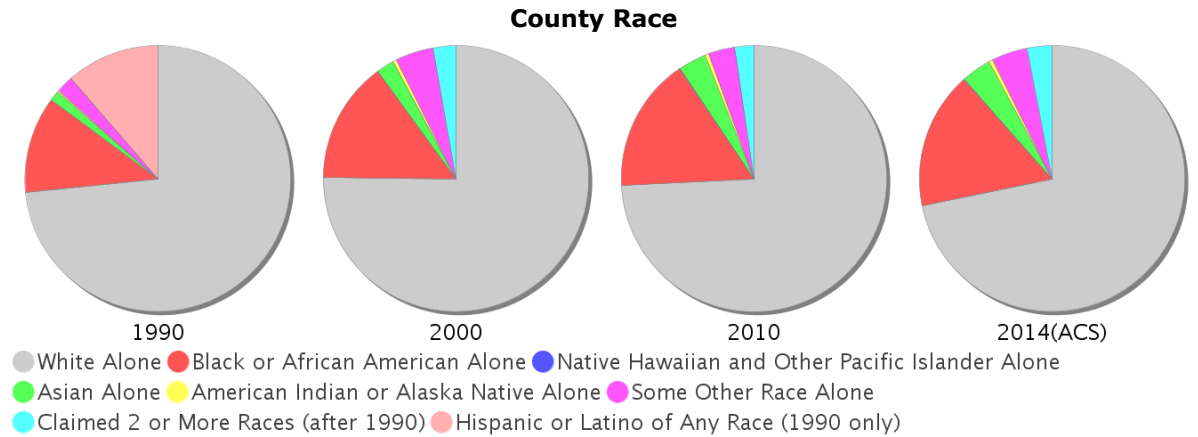
General Population Trends - Hillsborough

Description	1990	2000	2010	2014(ACS)
Total Population	834,054	998,948	1,200,236	1,279,668
Total Households	324,872	391,357	462,447	477,472
Average Persons per Acre	1.216	1.458	1.751	1.866
Average Persons per Household	2.567	2.508	3.00	2.64
Average Persons per Family	3.106	3.156	3.262	3.385
Males	406,217	488,596	585,512	624,290
Females	427,837	510,352	614,724	655,378



Race and Ethnicity Trends - Hillsborough

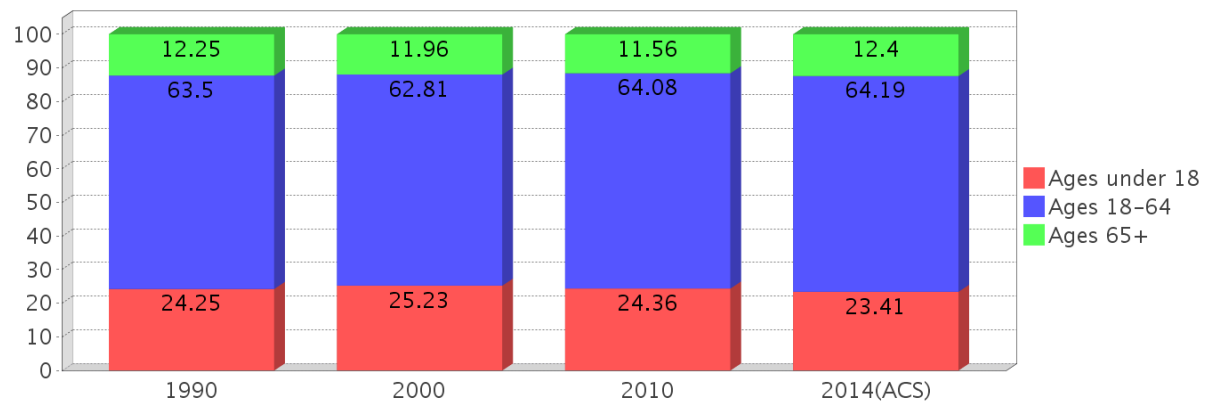
Description	1990	2000	2010	2014(ACS)
White Alone	690,352 (82.77%)	750,497 (75.13%)	890,392 (74.18%)	918,084 (71.74%)
Black or African American Alone	110,283 (13.22%)	147,966 (14.81%)	196,352 (16.36%)	213,555 (16.69%)
Native Hawaiian and Other Pacific Islander Alone	(NA)	540 (0.05%)	773 (0.06%)	1,023 (0.08%)
Asian Alone	11,093 (1.33%)	21,571 (2.16%)	40,285 (3.36%)	45,878 (3.59%)
American Indian or Alaska Native Alone	2,454 (0.29%)	4,175 (0.42%)	5,523 (0.46%)	6,635 (0.52%)
Some Other Race Alone	19,586 (2.35%)	46,587 (4.66%)	39,276 (3.27%)	55,568 (4.34%)
Claimed 2 or More Races	(NA)	27,612 (2.76%)	27,635 (2.30%)	38,925 (3.04%)
Hispanic or Latino of Any Race	106,908 (12.82%)	179,637 (17.98%)	286,394 (23.86%)	328,820 (25.70%)
Not Hispanic or Latino	727,146 (87.18%)	819,311 (82.02%)	913,842 (76.14%)	950,848 (74.30%)
Minority	568,661 (68.18%)	366,644 (36.70%)	568,661 (47.38%)	609,669 (47.64%)



Age Trends - Hillsborough

Description	1990	2000	2010	2014(ACS)
Under Age 5	7.30%	6.77%	6.70%	6.44%
Ages 5-17	16.95%	18.46%	17.66%	16.96%
Ages 18-21	5.96%	5.33%	5.91%	5.80%
Ages 22-29	14.20%	11.31%	11.83%	11.73%
Ages 30-39	17.39%	16.38%	13.93%	13.75%
Ages 40-49	12.95%	15.22%	15.18%	14.32%
Ages 50-64	13.00%	14.57%	17.23%	18.60%
Age 65 and Over	12.25%	11.96%	11.56%	12.40%
-Ages 65-74	7.41%	6.46%	6.21%	6.94%
-Ages 75-84	3.83%	4.20%	3.87%	3.83%
-Age 85 and Over	1.00%	1.29%	1.48%	1.63%
Median Age	NA	35	36	36

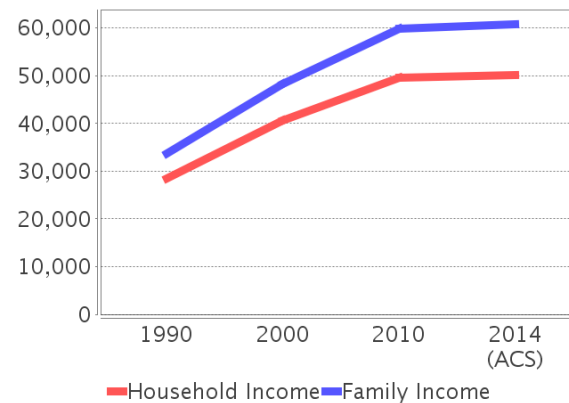
Percentage Population by Age Group



Income Trends - Hillsborough

Description	1990	2000	2010	2014(ACS)
Median Household Income	\$28,477	\$40,663	\$49,536	\$50,122
Median Family Income	\$33,645	\$48,223	\$59,886	\$60,777
Population below Poverty Level	13.29%	12.51%	14.17%	17.16%
Households below Poverty Level	12.66%	11.50%	13.11%	15.56%
Households with Public Assistance Income	6.07%	3.01%	2.06%	3.27%

Income Trends



Poverty and Public Assistance



Disability Trends - Hillsborough

See the Data Sources section below for an explanation about the differences in disability data among the various years.

Description	1990	2000	2010	2014(ACS)
Population 16 To 64 Years with a disability	48,345 (7.57%)	136,465 (14.85%)	NA (NA)	NA (NA)
Population 20 To 64 Years with a disability	NA (NA)	NA (NA)	NA (NA)	77,262 (9.89%)

Educational Attainment Trends - Hillsborough

Age 25 and Over

Description	1990	2000	2010	2014(ACS)
Less than 9th Grade	48,247	41,209	41,965	42,309
9th to 12th Grade, No Diploma	84,751	84,574	69,127	67,617
High School Graduate or Higher	412,022	528,058	672,988	741,630
Bachelor's Degree or Higher	110,070	164,109	226,113	253,518

Language Trends - Hillsborough

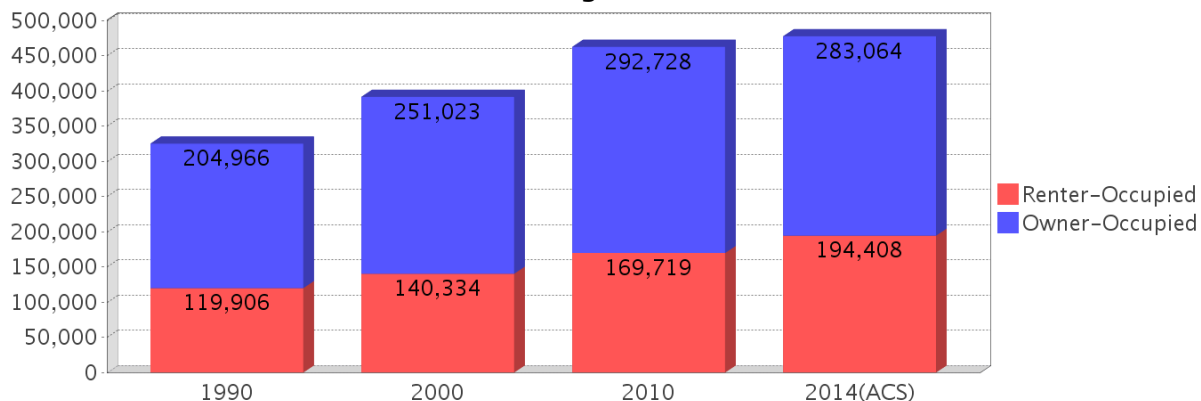
Age 5 and Over

Description	1990	2000	2010	2014(ACS)
Speaks English Well	23,611	39,227	54,355	51,233
Speaks English Not Well	NA	28,250	39,803	44,275
Speaks English Not at All	NA	13,819	19,950	22,446
Speaks English Not Well or Not at All	20,956	42,069	59,753	66,721

Housing Trends - Hillsborough

Description	1990	2000	2010	2014(ACS)
Total	367,740	425,962	526,016	544,259
Units per Acre	0.536	0.622	0.768	0.794
Single-Family Units	200,373	260,157	330,155	342,562
Multi-Family Units	87,418	122,837	153,087	159,088
Mobile Home Units	34,499	42,063	42,158	42,089
Owner-Occupied Units	204,966	251,023	292,728	283,064
Renter-Occupied Units	119,906	140,334	169,719	194,408
Vacant Units	42,868	34,605	63,569	66,787
Median Housing Value	\$72,400	\$91,800	\$198,900	\$156,700
Occupied Housing Units w/No Vehicle	28,289 (8.71%)	31,680 (8.09%)	30,440 (6.58%)	33,845 (7.09%)

Housing Tenure



County Data Sources

Demographic data reported is from the U.S. Decennial Census (1990, 2000, and 2010) and the American Community Survey (ACS) 5-year estimates from 2006-2010 and 2010-2014. The data was gathered at the county level. Depending on the dataset, the data represents 100% counts (Census Summary File 1) or sample-based information (Census Summary File 3 or ACS).

About the Census Data:

Use caution when comparing the 100% count data (Decennial Census) to the sample-based data (ACS). In any given year, about one in 40 or 2.5% of U.S. households will receive the ACS questionnaire. Over any five-year period, about one in eight households will receive the questionnaire, as compared to about one in six that received the long form questionnaire for the Decennial Census 2000. (Source: <http://mcdc.missouri.edu/pub/data/acs/Readme.shtml>) The U.S. Census Bureau provides help with this process:

http://www.census.gov/acs/www/guidance_for_data_users/comparing_2014/

Use caution when interpreting changes in Race and Ethnicity over time. In the 2000 Decennial Census, respondents were given a new option of selecting one or more race categories. Also in 2000, information on Hispanic origin was collected independent of race. Because of these changes, the 2000 data and later datasets are not directly comparable with race related data from the 1990 or earlier censuses. (Source: <http://www.census.gov/prod/2001pubs/c2kbr01-1.pdf>)

Disability data is not included in the 2010 Decennial Census, or the 2006-2010 ACS. This data is available in the 2010-2014 ACS.

Because of changes made to the Census and ACS questions between 1990 and 2014, disability variables should not be compared from year to year. For example: 1) With the 1990 data the disabilities are listed as a "work disability" while this distinction is not made with 2000 or 2013 ACS data; 2) The 2013 ACS data includes the institutionalized population (e.g. persons in prisons and group homes), while this population is not included in 1990 or 2000; 3) the age groupings changed over the years.

Please take the following two concerns into account when viewing this data: 1) With the 1990 data the disabilities are listed as a "work disability" while this distinction is not made with 2000 or 2014 ACS data; 2) The 2014 ACS data includes the institutionalized population (e.g. persons in prisons and group homes), while this population is not included in 1990 or 2000.

source:

<https://www.census.gov/people/disability/methodology/acs.html>

<https://www.census.gov/population/www/cen2000/90vs00/index.html>

The category Bachelor's Degree or Higher under the heading Educational Attainment Trends is a subset of the category High School Graduate or Higher.

Metadata

- Community and Fraternal Centers https://etdmpub.florida-estat.org/metadata/gc_communitycenter.htm
- Correctional Facilities in Florida https://etdmpub.florida-estat.org/metadata/gc_correctional.htm
- Cultural Centers in Florida https://etdmpub.florida-estat.org/metadata/gc_culturecenter.htm
- Fire Department and Rescue Station Facilities in Florida https://etdmpub.florida-estat.org/metadata/gc_firestat.htm
- Local, State, and Federal Government Buildings in Florida https://etdmpub.florida-estat.org/metadata/gc_govbuild.htm
- Florida Health Care Facilities https://etdmpub.florida-estat.org/metadata/gc_health.htm
- Hospital Facilities in Florida https://etdmpub.florida-estat.org/metadata/gc_hospitals.htm
- Law Enforcement Facilities in Florida https://etdmpub.florida-estat.org/metadata/gc_lawenforce.htm
- Florida Parks and Recreational Facilities https://etdmpub.florida-estat.org/metadata/gc_parks.htm

- Religious Centers https://etdmpub.florida-etat.org/metadata/gc_religion.htm
- Florida Public and Private Schools https://etdmpub.florida-etat.org/metadata/gc_schools.htm
- Social Service Centers https://etdmpub.florida-etat.org/metadata/gc_socialservice.htm
- Assisted Rental Housing Units in Florida https://etdmpub.florida-etat.org/metadata/gc_assisted_housing.htm
- Group Care Facilities <https://etdmpub.florida-etat.org/metadata/groupcare.htm>
- Mobile Home Parks in Florida https://etdmpub.florida-etat.org/metadata/gc_mobilehomes.htm
- Migrant Camps in Florida <https://etdmpub.florida-etat.org/metadata/migrant.htm>
- Veteran Organizations and Facilities https://etdmpub.florida-etat.org/metadata/gc_veterans.htm
- Generalized Land Use - Florida DOT District 7 https://etdmpub.florida-etat.org/metadata/d7_lu_gen.htm
- Census Block Groups in Florida https://etdmpub.florida-etat.org/metadata/e2_cenacs_cci.htm
- 1990 Census Block Groups in Florida https://etdmpub.florida-etat.org/metadata/e2_cenblkgrp_1990_cci.htm
- 2000 Census Block Groups in Florida https://etdmpub.florida-etat.org/metadata/e2_cenblkgrp_2000_cci.htm
- 2010 Census Block Groups in Florida https://etdmpub.florida-etat.org/metadata/e2_cenblkgrp_2010_cci.htm