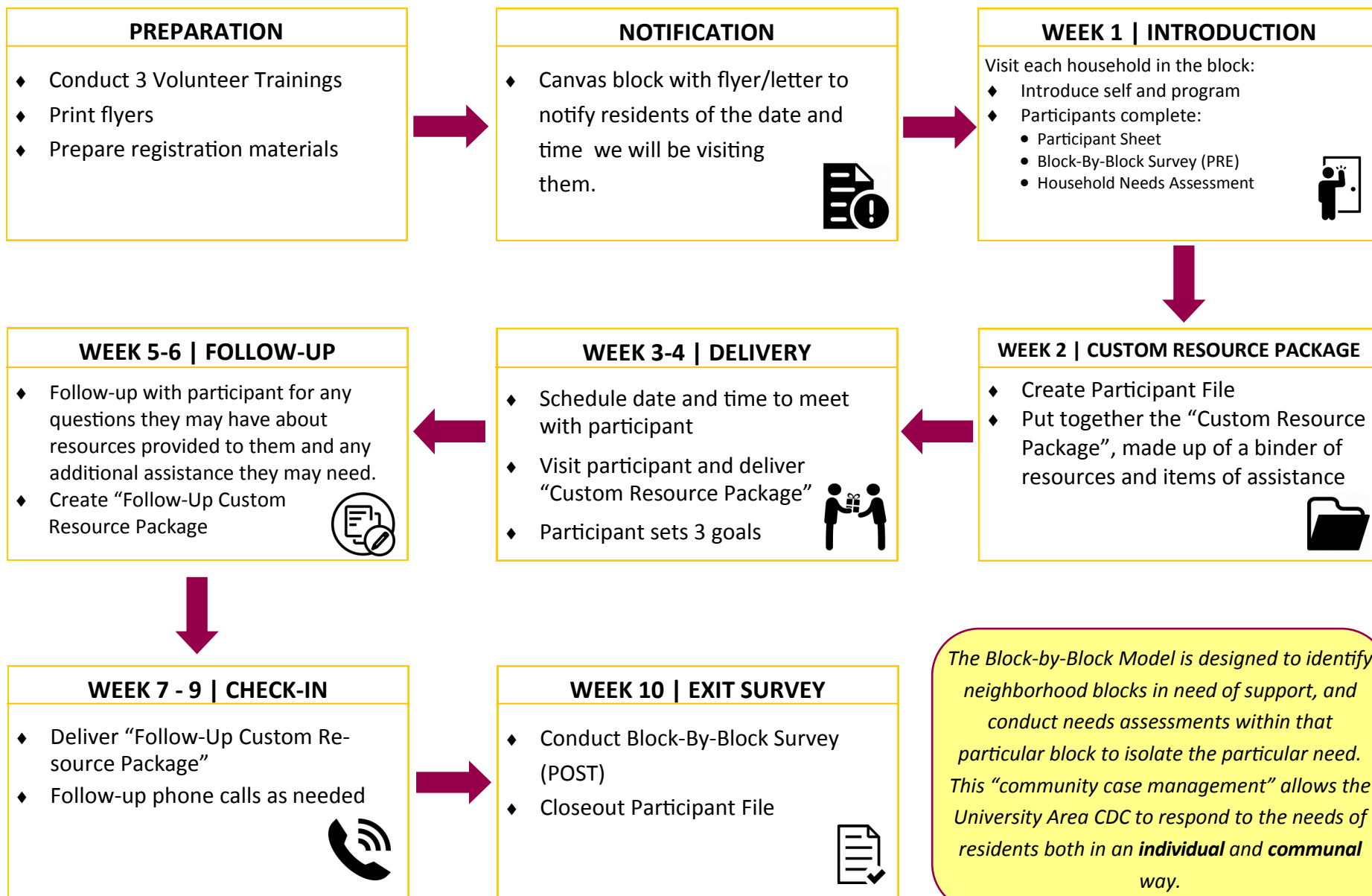


# BLOCK-BY-BLOCK MODEL



*The Block-by-Block Model is designed to identify neighborhood blocks in need of support, and conduct needs assessments within that particular block to isolate the particular need. This “community case management” allows the University Area CDC to respond to the needs of residents both in an **individual** and **communal** way.*

**BLOCK-BY-BLOCK PROGRAM IMPLEMENTATION : BLOCKS 1 - 6**

Objectives / Activities	Jul-17	Aug-17	Sep-17	Oct-17	Nov-17	Dec-17	Jan-18	Feb-18	Mar-18	Apr-18	May-18	Jun-18	Jul-18	Aug-18	Sep-18	Oct-18	Nov-18	Dec-18
Volunteer Training	7.3		9.14   9.21				1.31	2.7   2.14 2.1   2.8   2.15			5.17   5.24   5.31				9.26 9.13   9.20			
Notification	7.5		9.21					2.14   2.15			5.31				9.26   9.27			
Week 1: Introduction	7.8		9.24   9.26					2.17   2.19				6.2   6.4			9.29   10.1			
Week 2: Custom Resource Package	7.10 - 7.14		9.28 - 10.5					2.21 - 3.4				6.7 - 6.14				10.3 - 10.12		
Week 3-4: Delivery	7.17 - 7.28			10.9 - 10.15					3.5 - 3.16			6.18 - 6.22				10.15 - 10.19		
Week 5-6: Follow-Up	7.31 - 8.11			10.19 - 10.27					3.21 - 4.3			6.28 - 7.12				10.24 - 11.6		
Week 7-9: Check-In		8.14 - 9.1			11.2 - 11.17					4.4 - 4.18			7.12 - 7.26				11.7 - 11.21	
Week 10: Exit Survey			9.4 - 9.9		11.27 - 12.3					4.19 - 4.27			7.26 - 8.3				11.22 - 12.7	

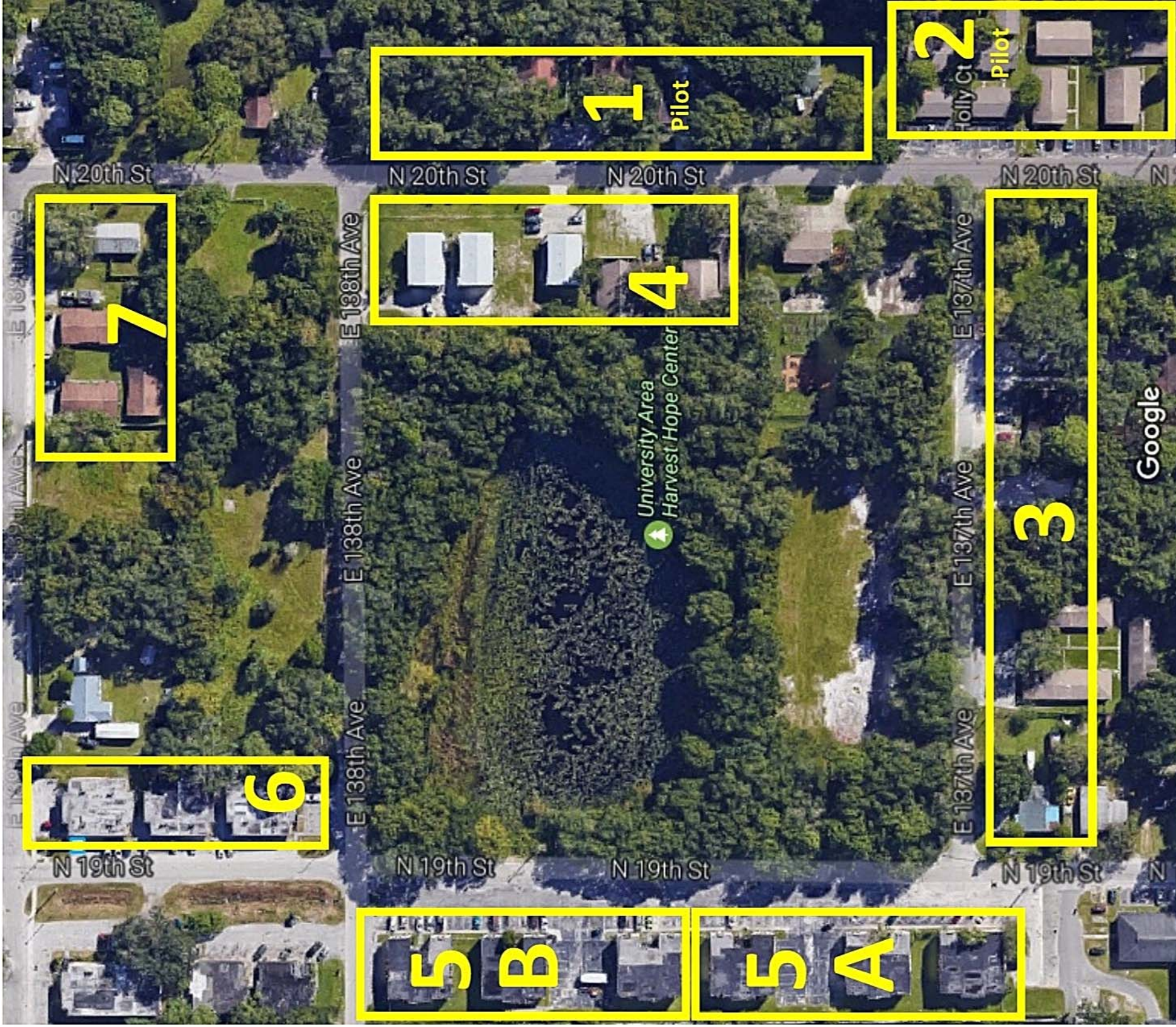
**Pilot Block 1** 2 families served | Implemented by 2 UACDC staff

**Pilot Block 2** 9 families served | 16 volunteers from USF Global Citizens Project | Meetings (7) : Thursdays 2pm - 3:15pm

**Block 3 & 4** 11 families served | 10 volunteers from USF Global Citizens Project, 10 General Volunteers (USF) | Meetings (8): Wednesdays 2pm - 3:15pm (GCP) ; Thursdays 3pm -5pm (USF)

**Block 5A** 11 families served | 9 USF General Volunteers (USF) | Meetings (8): Thursdays 3pm - 5pm

**Block 5B & 6** 12 volunteers from USF Global Citizens Project, 13 General Volunteers (11 USF) | Meetings (8): Wednesdays 2pm - 3:15pm (GCP) ; Thursdays 6pm - 7:30pm (General)



1 Pilot

2 Pilot

3

4

5 B

5 A

6

7

Google

University Area  
Harvest Hope Center

N 20th St

N 20th St

N 20th St

N 20th St

N 19th St

N 19th St

N 19th St

N 19th St

E 1388th Ave

E 1388th Ave

E 1388th Ave

E 1377th Ave

E 1377th Ave

E 1377th Ave

E 1377th Ave

E 1377th Ave